

The background of the slide features a blurred image of a calendar, with visible months such as March and November. Overlaid on this are several semi-transparent circular patterns, some consisting of concentric dotted lines and others of solid lines, creating a layered, geometric effect.

Classroom Planning

Presentation to Academic Senate

February 11, 2021

Classroom Use Analysis

Fall 2019 and Spring 2020 schedule review:

- MW peak usage: 9:40am - 12:30pm
- TR peak usage: 9:10am - 2:30pm
- TR is more impacted than MW

More classes/sections are scheduled during
fall semesters than spring semesters

During peak room usage:

- Spring 2020: MW used **9** portables
- Spring 2020: TR used **11** portables
- Fall 2019 MW: used 6 portables and LC 20, 36, 38, 39, 53, 110
 - Total of **12** classrooms
- Fall 2019 TR: used 8 portables and LC 32, 35, 36, 38, 39, 53, 110
 - Total of **15** classrooms

Classroom Use Analysis

Distance Education



62 online courses were offered in Spring 2020



Planned growth areas include Communication, Business, Drama, Chemistry, Biology, Anthropology, Humanities/English, and Adapted PE



This will likely result in some reduction in classroom demand, although the amount cannot yet be estimated, and **thus is not included in this analysis**

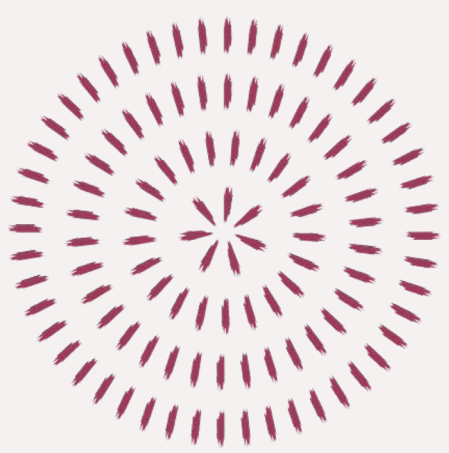
IVC Classroom Counts

Pre-Pomo Renovation: **15**

Post-Pomo Renovation: **23**

Notes:

1. Totals are classrooms open for general scheduling and do not include dedicated space (AUTO, MMST, MACH, WELD, MEDA, DENT, EMT).
2. IVC classroom additions noted here are not included in this analysis, but are included for context.



Classroom Needs Moving Forward

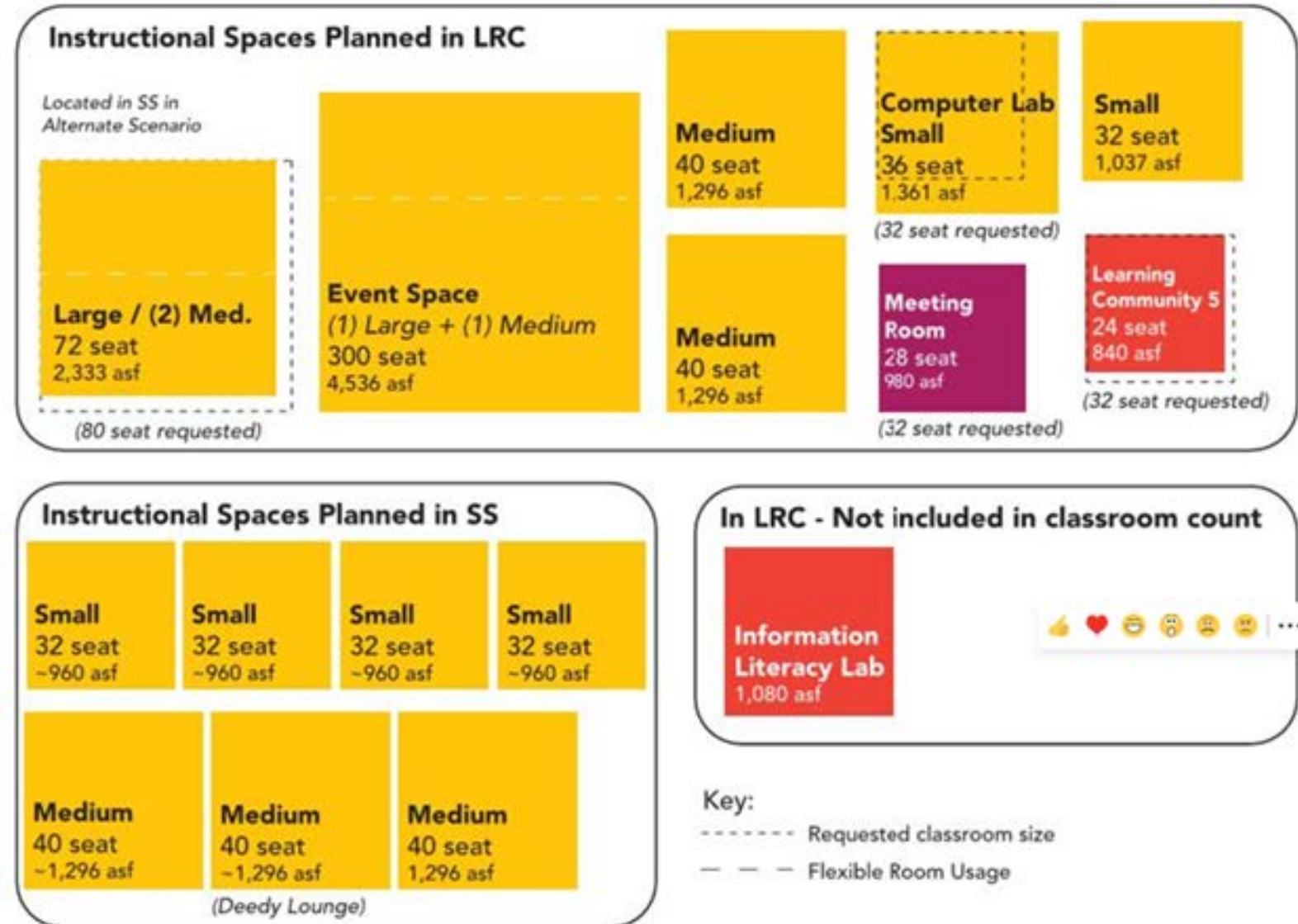
Based on Fall 2019 maximum classroom usage during peak scheduling, **15 classrooms** are needed to eliminate portables at the Kentfield campus.



Initial Classroom Needs Assumptions

Program Planning: WLC Architects, 2018

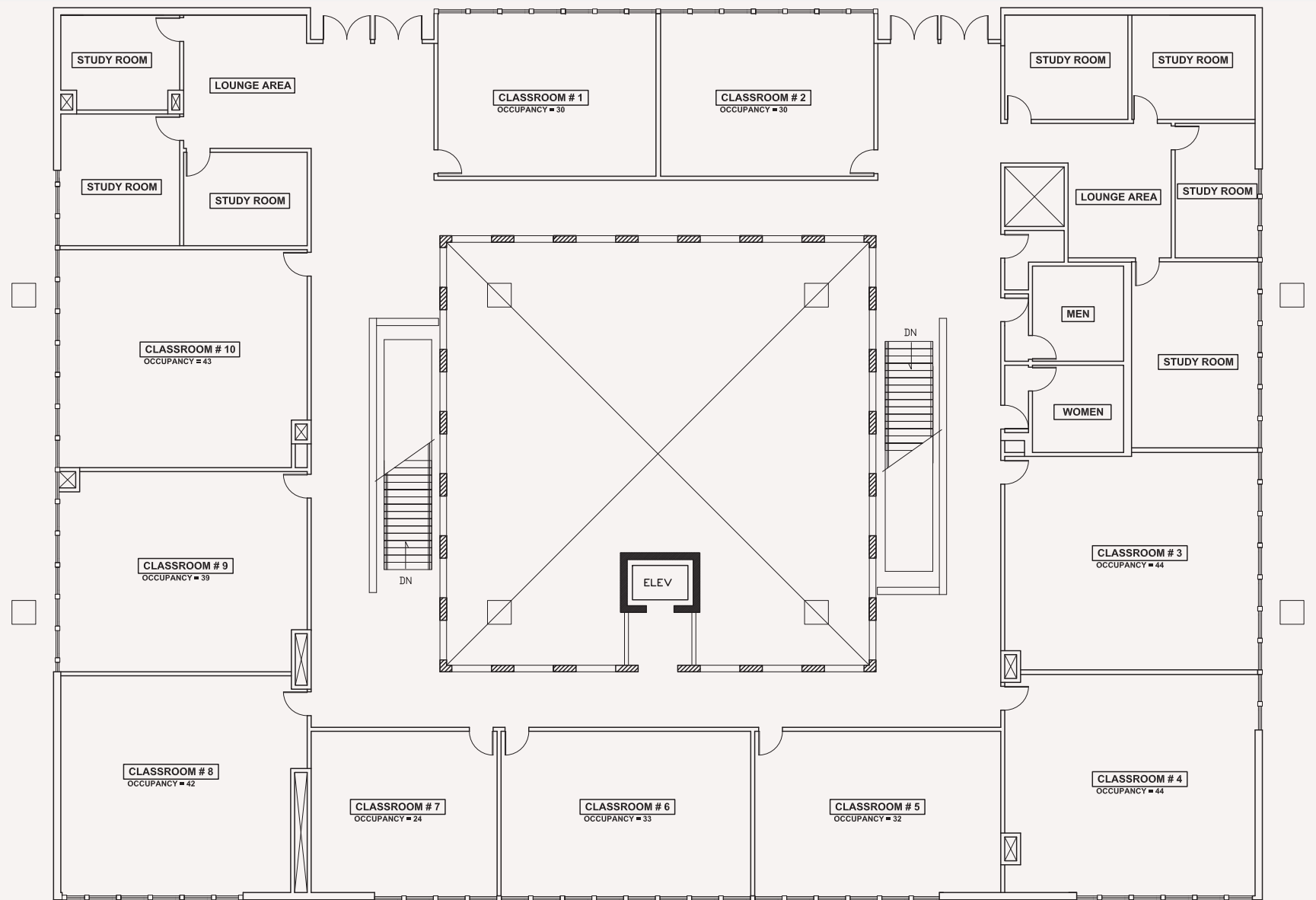
FULLFILLMENT OF REQUESTED FUTURE CLASSROOMS (DIAGRAM VIEW)



Student Services Classroom Verification Exercise:

10 Classrooms on 2nd Floor

(plus 7 offices/study rooms)



Current KTD Classroom Planning Status

Integrated LRC/SS Project: **9** Classrooms

SS Building: **10** Classrooms

(2nd floor only: 4 additional can be created on 1st floor)

Total Planned Classrooms: **19** (plus 4 as necessary)

Total Current Need: **15**

Surplus: **4** (8)

Note: Bond Spending Plan #13 includes funding for both Integrated LRC/SS Project and SS Building Classroom construction

Questions

